

# Hybrid approach for Automatic Evaluation of Emotion Elicitation oriented to people with intellectual disabilities

R. Martínez, K. López de Ipiña, E. Irigoyen,  
N. Asla, N. Garay, A. Ezeiza, I. Fajardo

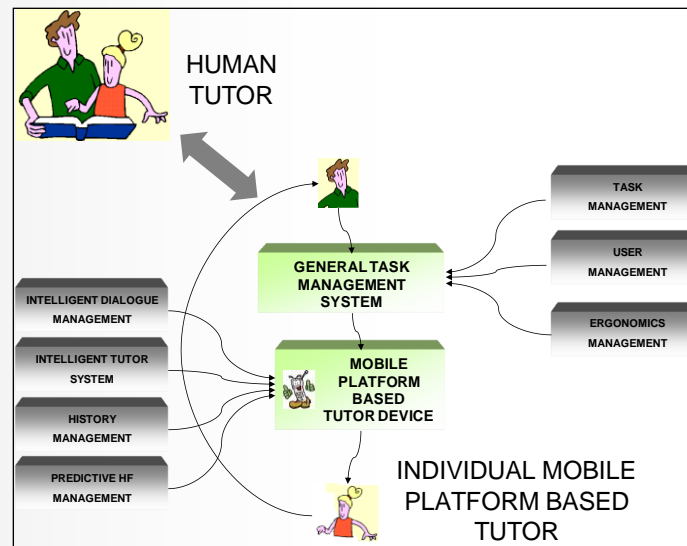


## Index

- Introduction
  - Research line framework
  - Blockage states
- Objectives
- Process
  - Identification
  - Emotions in laboratory
  - Video database
  - Validate database
- Experimental result
  - Analytical assessment
  - Manual assessment
- Conclusions and future works

## Research line framework

- Intelligent Tutoring System (ITS) to assist the integration of people with intellectual disabilities.



INTRODUCTION

●○

OBJECTIVES

○

PROCESS

○○○○

EXPERIMENTAL RESULTS

○○

CONCLUSIONS

○

## Research line framework

- General Task Management System (GTMS) to optimize the ITS
  - Human Emotion Management System (HEMS) is part of GTMS: Analysis, evaluation and identification



assistive People with Intellectual Disabilities  
in Blockage States

INTRODUCTION



OBJECTIVES



PROCESS



EXPERIMENTAL RESULTS



CONCLUSIONS



## Blockage states

- Appear when:
  - They are anxiously, they suffer a panic attack, the task requirements are further than they can do...



- Generate
  - Detention of everyday life: work or home
  - Health Problems
  - Risk in people or things

INTRODUCTION

●●

OBJECTIVES

○

PROCESS

○○○○

EXPERIMENTAL RESULTS

○○

CONCLUSIONS

○

## Objectives

- Predict or detect a blockage state to assist the person before this situation is fully revealed.
- Associate Emotional changes to blockage states
- Linking physiological signals to emotions.
- Non-intrusive sensor to the physiological signal acquisition

INTRODUCTION

○○

OBJECTIVES

●

PROCESS

○○○○

EXPERIMENTAL RESULTS

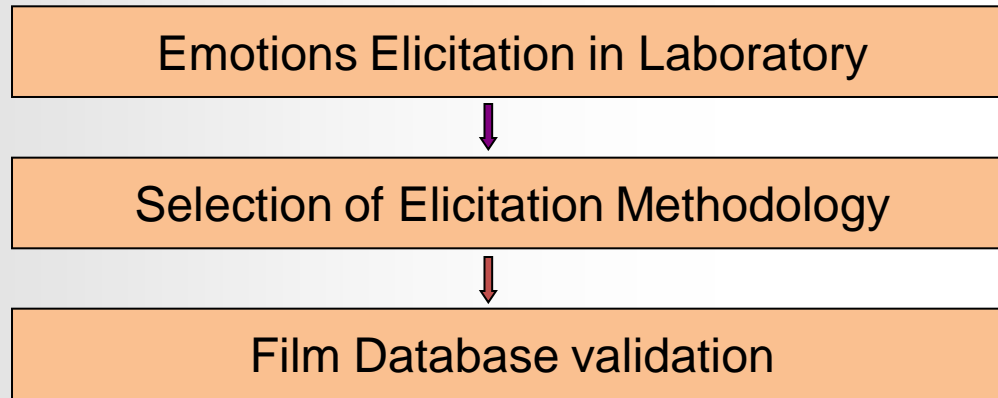
○○

CONCLUSIONS

○

## Identification process:

- First stage:
  - Modelling emotions in people without disabilities



- Second stage:

Emotions Elicitation - Physiological Variables BIOPAC

## Emotions Elicitation in Laboratory

- Study of several methodologies proposed:
  - Slides, hypnosis, real events memories , FILMS,...
- Elicitation by films
  - GROSS, Philppot, Hewing ...
  - Emotional films database selection:
    - Amusement, anger, contentment, disgust, sadness, surprise and fear, with a relatively neutral state.
  - Discrete emotions questionnaire (18 emotions)
  - Set up experiments

INTRODUCTION

○○

OBJECTIVES

PROCESS

○●○○

EXPERIMENTAL RESULTS

○○

CONCLUSIONS

○



## Description of the Video Elicitation database

- Gross: Films proposed by Gross (1995-200X)
- Gross+RF: New films – Gross and Real Films
  - Old films with bad image and sound quality
  - Translation into Spanish
  - Many movies were watched by people

|            | Id -Num | Film Num | Real Scene N | Istances |
|------------|---------|----------|--------------|----------|
| Gross      | 10      | 13       | 1            | 61       |
| Gross+RF   | 123     | 20       | 7            | 1354     |
| Gros+RF-SS | 13      | 17       | 6            | 72       |

- Validate the Gross+RF

INTRODUCTION

○○

OBJECTIVES

PROCESS

○○●○

EXPERIMENTAL RESULTS

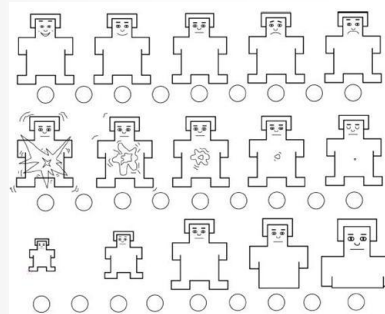
○○

CONCLUSIONS

○

## Validation Method/Methodology

- 7 Groups of films pending of the emotion (GROSS)
- Wellness, Disgust, Surprise, Fun, Sorrow, Fear and Anger,
- Screening of 9 productions with 10 video clips (...)
- Facilities: Screen, room, order movies, ...
- Assessment of emotion in each video clip
  - Discrete: Change/Modify Gross Questionnaire (16 emotions)
  - Dimensional: SAM



Las siguientes preguntas se refieren a la intensidad de las emociones mientras veías la película.

| 0    | 1 | 2    | 3 | 4 | 5 | 6     | 7 | 8 |  |
|------|---|------|---|---|---|-------|---|---|--|
| nada |   | algo |   |   |   | mucho |   |   |  |

Usando la escala de arriba, por favor indica el valor máximo de CADA emoción.

|               |               |              |                  |
|---------------|---------------|--------------|------------------|
| ___ diversión | ___ vergüenza | ___ alegría  | ___ pena         |
| ___ enfado    | ___ miedo     | ___ orgullo  | ___ rabia        |
| ___ ansiedad  | ___ asco      | ___ tristeza | ___ impotencia   |
| ___ bienestar | ___ felicidad | ___ sorpresa | ___ tranquilidad |

Has sentido alguna otra emoción mientras veías la película? Sí  No

En caso afirmativo, ¿cuál fue la emoción? \_\_\_\_\_

¿Con qué intensidad la has sentido? \_\_\_\_\_

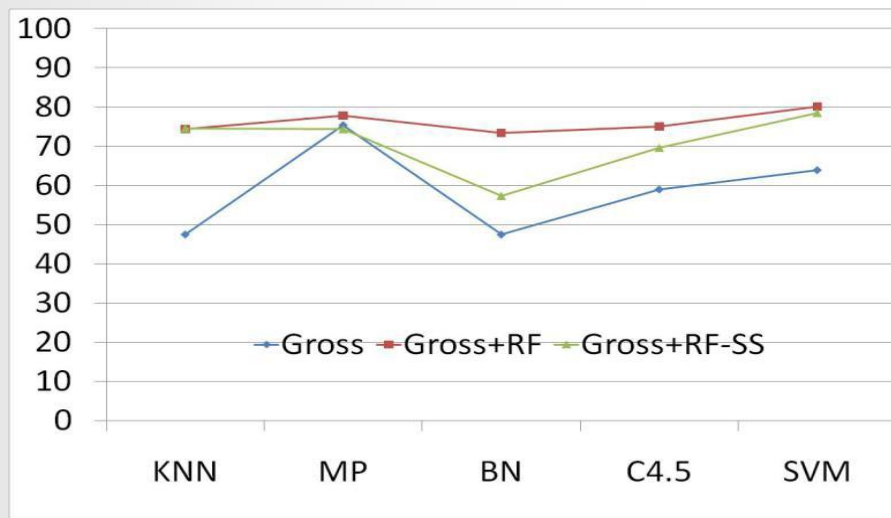
Por favor haz un círculo en la escala de abajo para expresar lo a gusto o no que te has sentido mientras estabas viendo la película.

|            |   |   |   |         |   |   |   |   |
|------------|---|---|---|---------|---|---|---|---|
| 0          | 1 | 2 | 3 | 4       | 5 | 6 | 7 | 8 |
| a disgusto |   |   |   | a gusto |   |   |   |   |

¿Has visto esta película antes? Sí  No

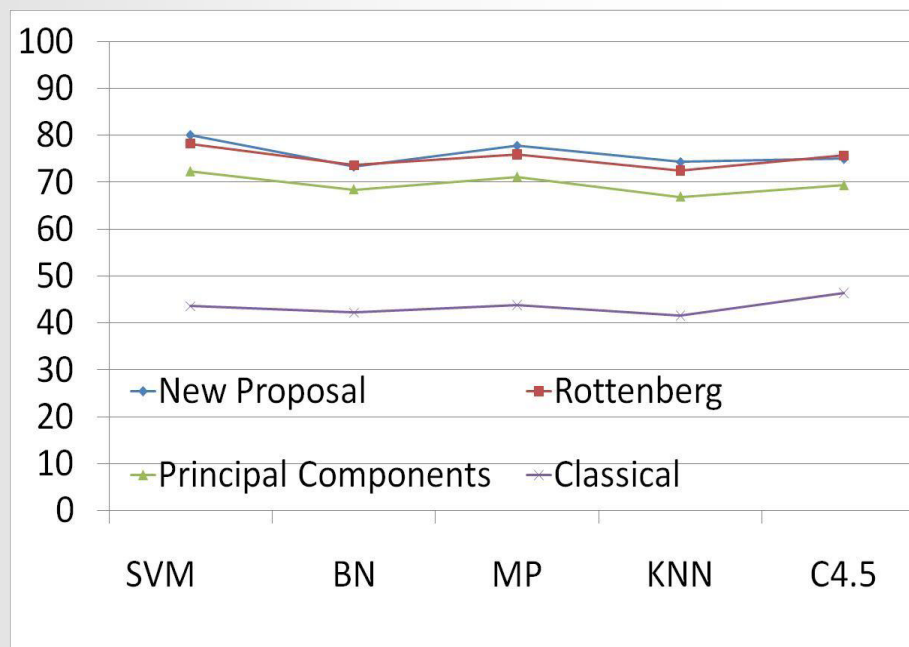
## Automatic Analytic Assessment

- Automatic classification methods
  - Paradigm: KNN, MP, BN, C4.5 and SVM
  - Test on the 3 films database
  - The SVM paradigm was the most accurate
  - Gross + RF better classification, in relation to other DBs



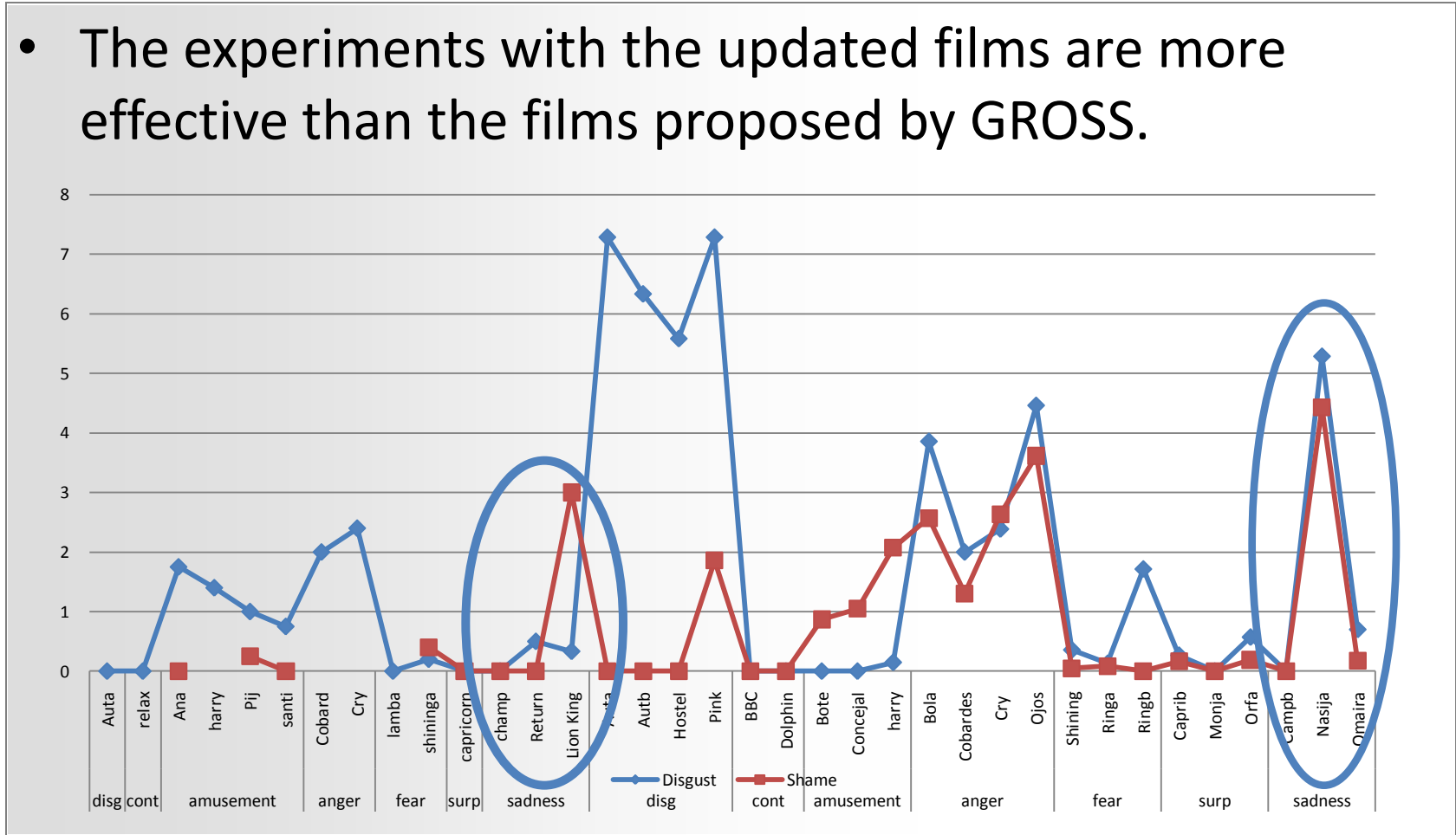
## Automatic Analytic Assessment

- Gross+RF assessed with different emotions



# Manual Assessment

- The experiments with the updated films are more effective than the films proposed by GROSS.



INTRODUCTION

○ ○

OBJECTIVES

PROCESS

○ ○ ○ ○

EXPERIMENTAL RESULTS

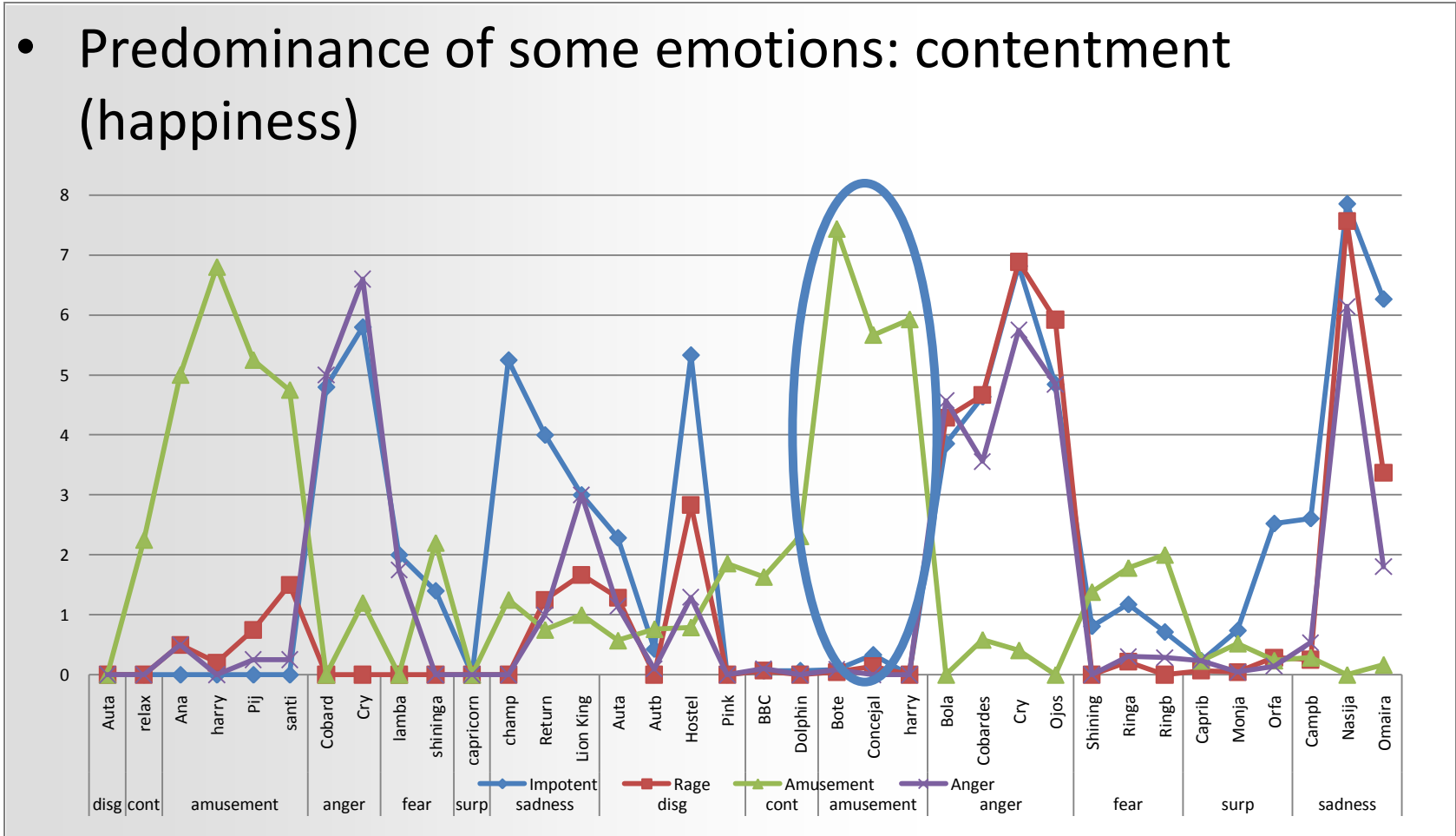
○ ●

CONCLUSIONS

○

# Manual Assessment

- Predominance of some emotions: contentment (happiness)



INTRODUCTION

○ ○

OBJECTIVES

PROCESS

○ ○ ○ ○

EXPERIMENTAL RESULTS

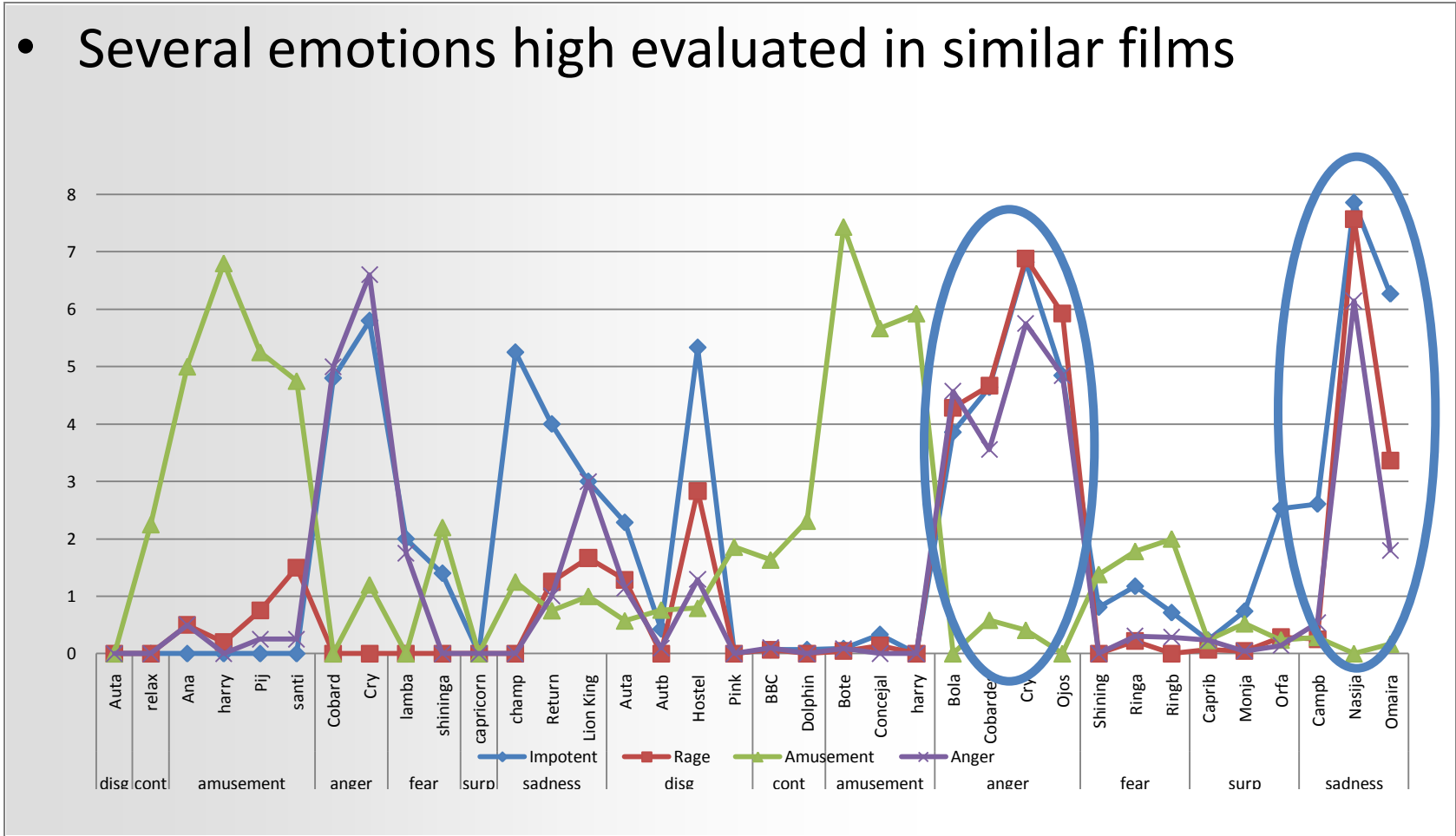
○ ●

CONCLUSIONS

○

# Manual Assessment

- Several emotions high evaluated in similar films



INTRODUCTION

○○

OBJECTIVES

PROCESS

○○○○

EXPERIMENTAL RESULTS

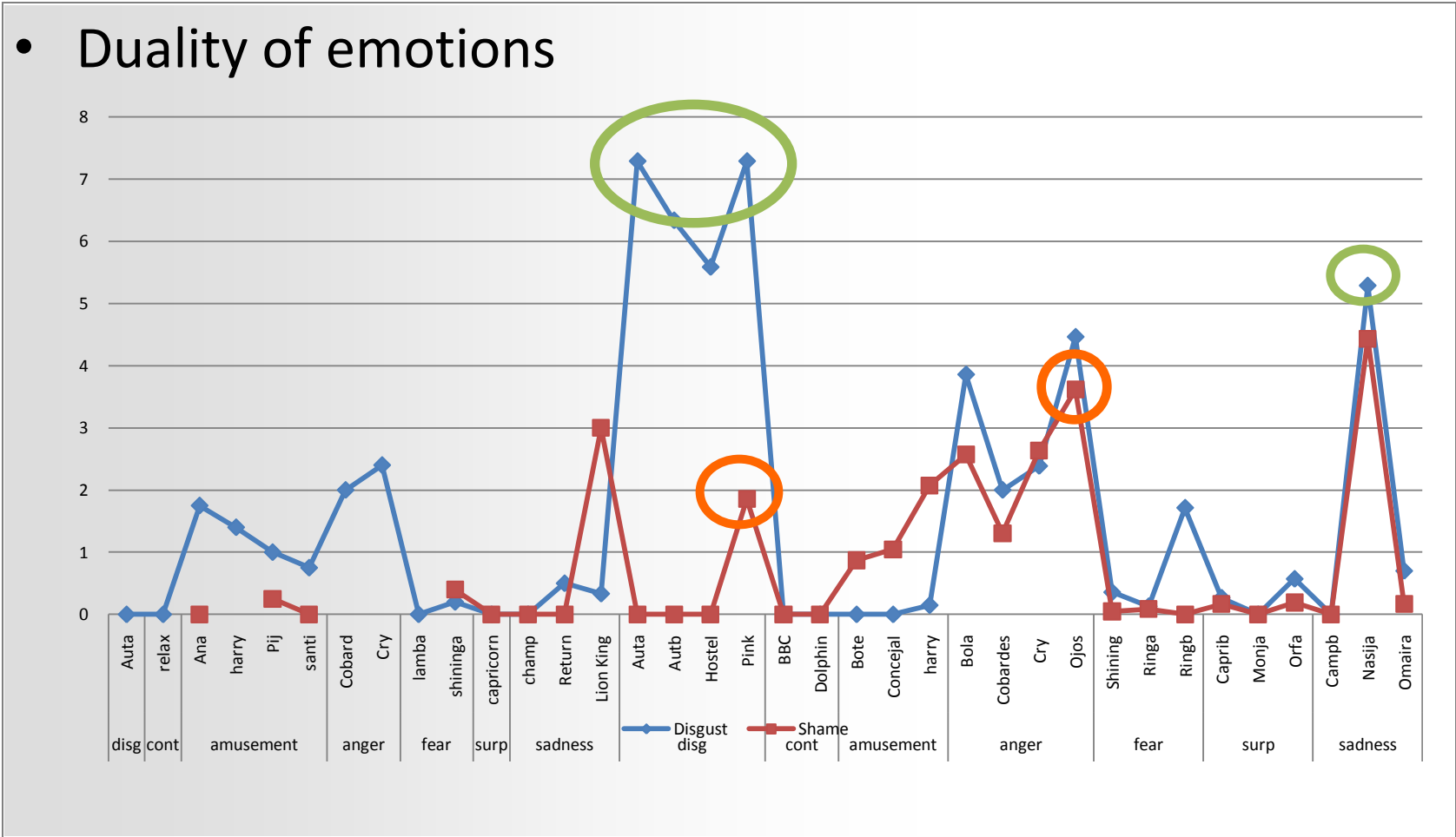
○●

CONCLUSIONS

○

# Manual Assessment

- Duality of emotions



INTRODUCTION

○○

OBJECTIVES

PROCESS

○○○○

EXPERIMENTAL RESULTS

○●

CONCLUSIONS

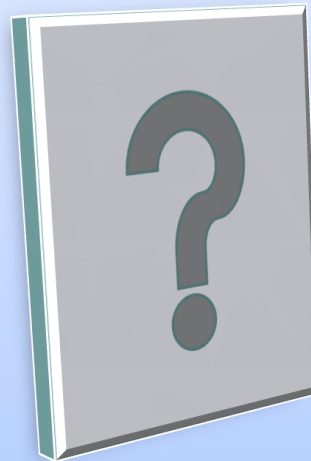
○



## Conclusions and future works:

- First steps in designing a HEMS for being part of a GTMS to be included in an ITS to assist people with intellectual disabilities.
- Testing of a set of films for elicitation of human emotions.
- High level of accuracy in classifying human emotions through our database.
- New experimentation to measure physiological signals.
- Study of NIIS for sensing people without being intrusive.
- Analysis of human emotions in people with ID.

## For any question...



**Contact:** Eloy Irigoyen – [eloy.irigoyen@ehu.es](mailto:eloy.irigoyen@ehu.es)  
Karmele López de Ipiña – [karmele.ipina@ehu.es](mailto:karmele.ipina@ehu.es)